



ARIS Multi Data View for ArcMap

User Manual

February 5, 2014

ARIS
Hooghiemstraplein 126
3514 AZ Utrecht
The Netherlands
<http://www.aris.nl>

Table of Contents

1.	Introduction	3
2.	Installation	4
3.	Registration	5
4.	Using ARIS Multi Data View for ArcMap	6
4.1	Getting Started	7
4.2	Data View Toolbar	10
4.3	Data View Behavior	11
4.4	Data View Location Pointer	12
4.5	Data View Limitations	14

1. Introduction

ARIS Multi Data View for ArcMap is designed to create up to 3 extra Data Views in ArcMap, each having a choice of staying synchronized with the Main Map or to show a 'frozen' situation for comparison.

ARIS Multi Data View for ArcMap is suitable for ArcMap 9.2 and ArcMap 9.3.

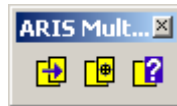
In this manual you will find information on the installation, registration and usage of the product. For further questions and support you can contact us at helpdesk@aris.nl.

Product information and download: <http://www.aris.nl/shop/>

2. Installation

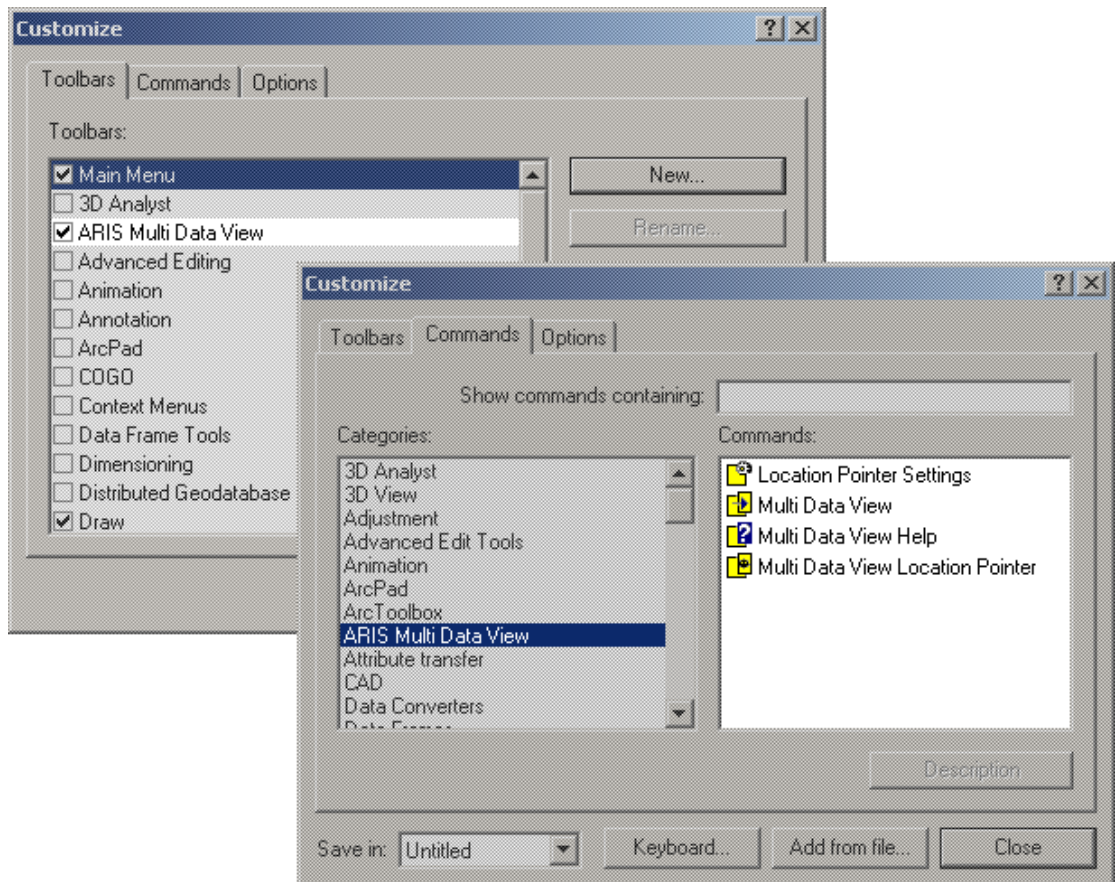
The installation of ARIS Multi Data View for ArcMap is accomplished by completing the following two steps:

1. Execute the automatic installer, ArisMultiDataView.exe. You need to be logged in as a user with administrator privileges to run the installer;
2. In the menu of ArcMap, choose *Tools > Customize...*
In the *Customize* window (as shown below), choose the *Toolbars* tab and check *ARIS Multi Data View*. The Multi Data View toolbar will now pop-up:



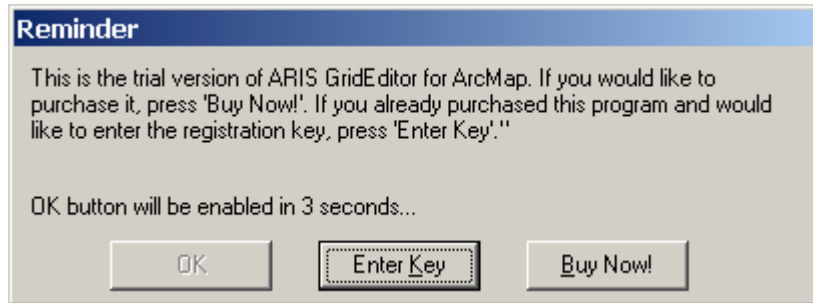
It's possible to drag this toolbar to any location on your screen. You can also dock it next to or underneath the default toolbar of ArcMap.

If you would like to save some space on the toolbar or you don't need certain buttons, you can make use of the *Commands* tab in the *Customize* window. It's possible to remove a button from the ARIS Multi Data View toolbar by dragging the desired button out of the toolbar. Also, you can add the button(s) you need by dragging one or more of the button(s) in the category *ARIS Multi Data View* onto the toolbar.



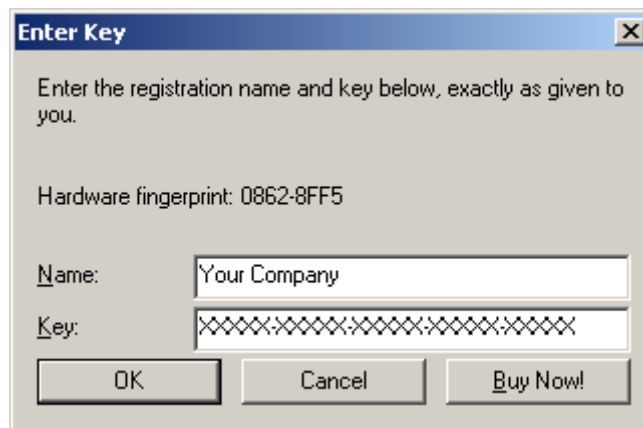
3. Registration

The distributed version of the ARIS Multi Data View for ArcMap is a fully functional version, except that a reminder message is shown each time you open an extra Data View and incidentally when pressing a button on the Data View's toolbar.

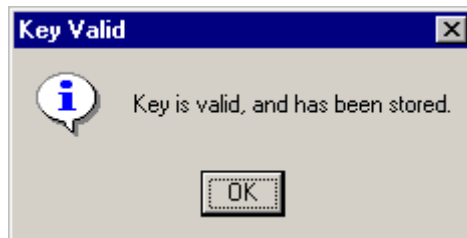


Pressing the *Buy Now!* button will take you to our online store, where you can order this product. Note that you will need the hardware fingerprint of the computer where you want to install the tool, shown in the dialog below (appears when you press *Enter Key*). After you complete your purchase, a personal registration key will be sent to you by email. Please store this key in a safe place.

Pressing the *Enter Key* button will present you with the following dialog, where you must enter your name and the registration key.



Once you have entered a valid registration key, press *OK*. This key will be stored on your pc.



4. Version History

4.1 Version 1.1

Version 1.1 is the first release of ARIS Multi Data View for ArcMap.

4.2 Version 2.0

ArcGIS 9.2 and ArcGIS 9.3 compatibility


- Version 2.0 of the ARIS Multi Data View for ArcMap is compatible for ArcGIS 9.2 and ArcGIS 9.3.

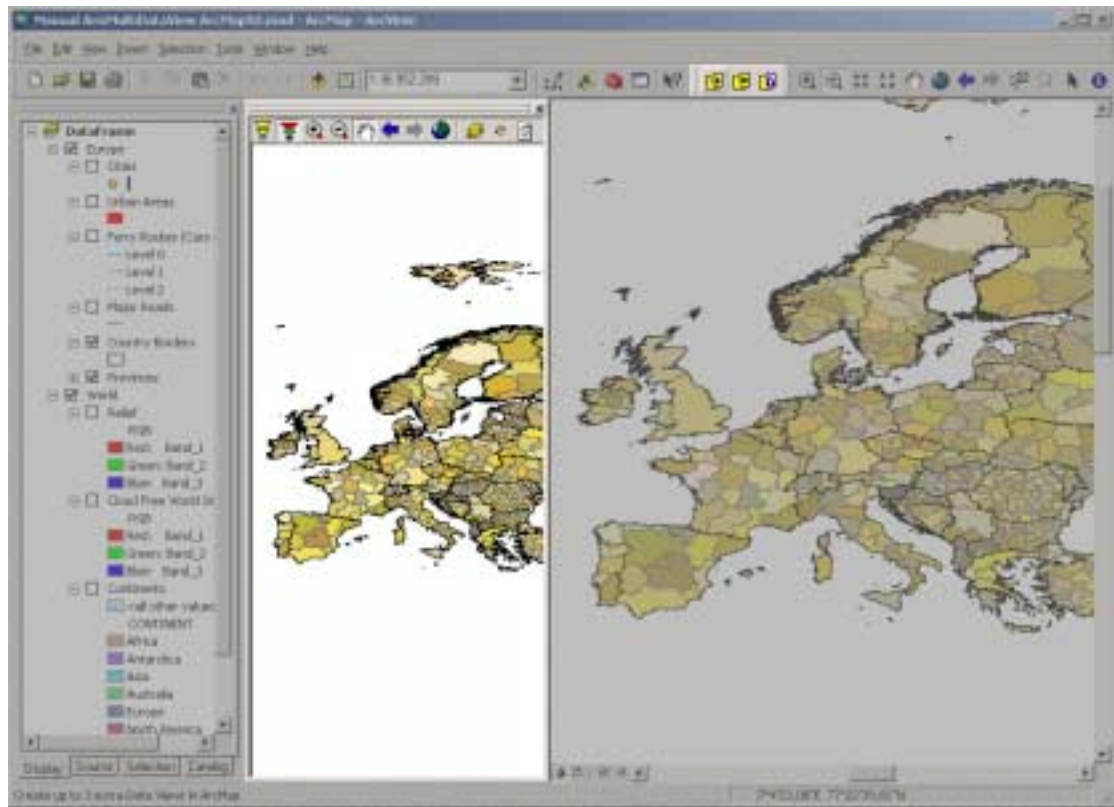
Additional functionality

- A new feature is the possibility to show a Location Pointer in the Data View(s).



5. Using ARIS Multi Data View for ArcMap

5.1 Getting Started


Use the button  to create a copy of the current map. A Data View with exactly the same layers as in the active data frame appears. The Data View is highlighted in the picture below.

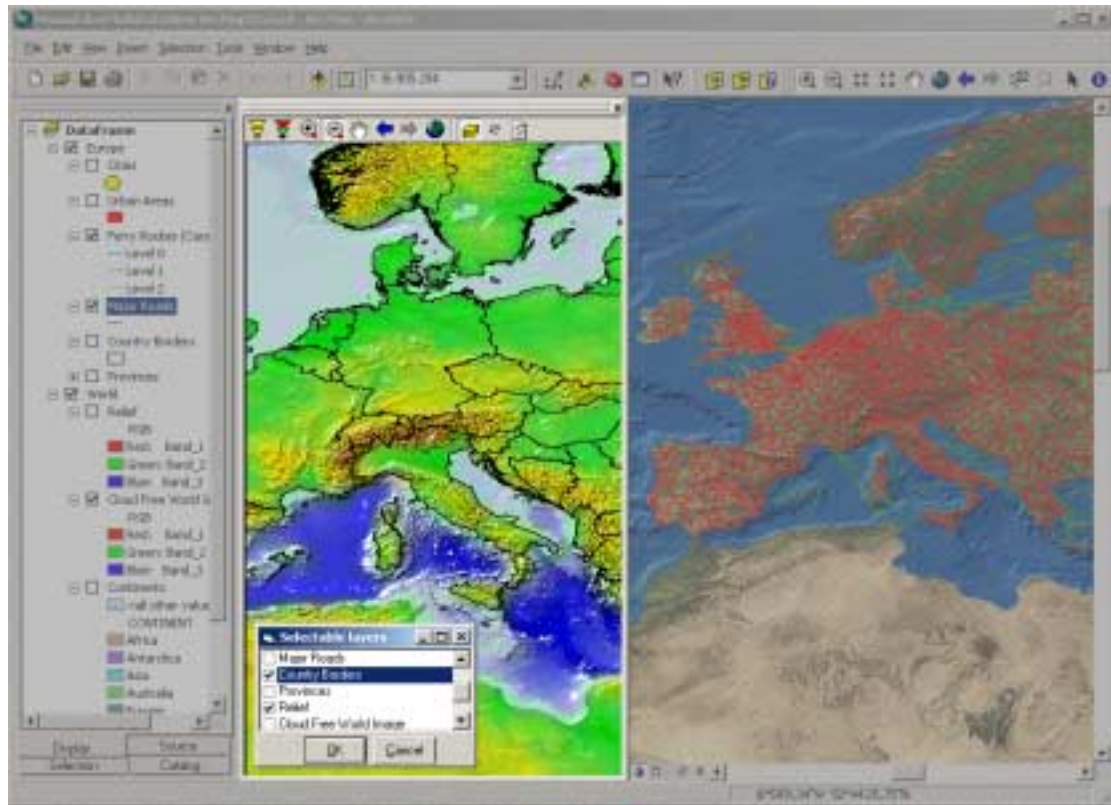


By default, the Data View is synchronized with the main map view of ArcMap. This includes synchronization of the legend. So, when changing the extent in the main map, the extent in the Data View changes too.

After toggling the synchronization to non-synchronize with the -button or , the extent of the Data View does *not* change when the extent of the main map is changed.

When synchronization is toggled on again, the extent of the Data View is set to the extent in the main map view.

In the Data View a selection of the layers can be displayed using the  button. These layers need to be available in the Table of Content of ArcMap, but they don't need to be active in the main map view.

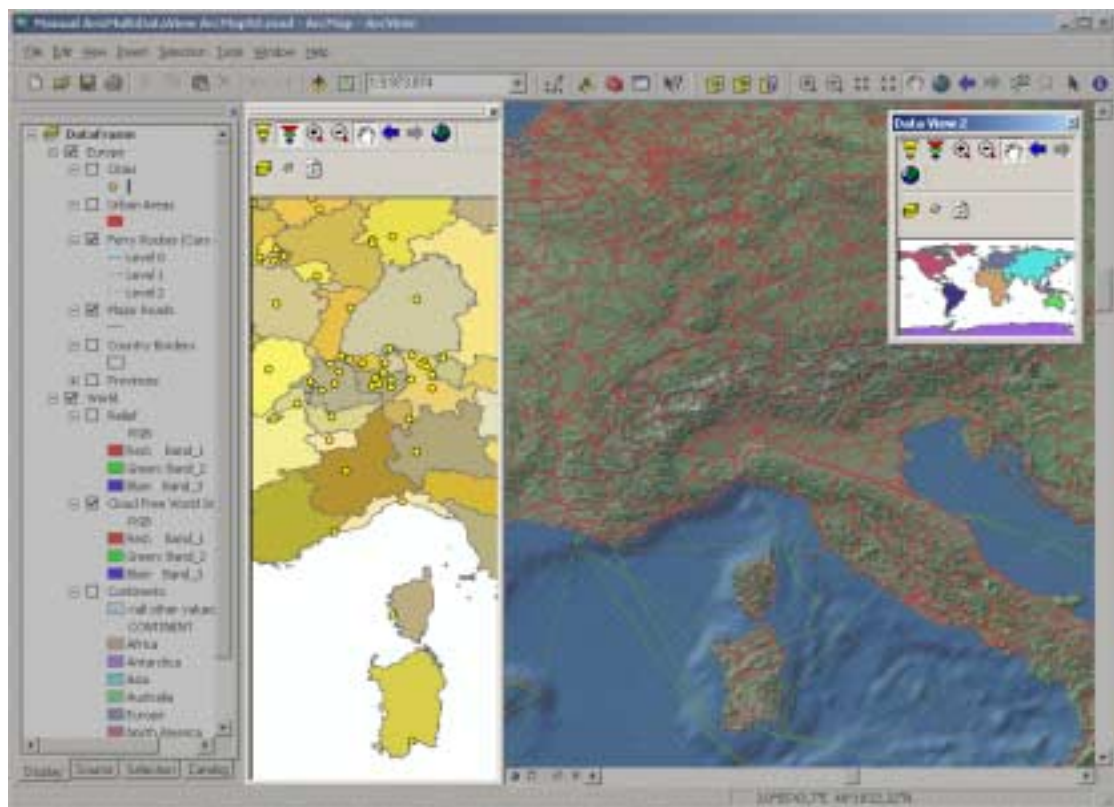



Up to three Data Views can be displayed. The Data View is a dockable window that can exist in a floating state or it can be attached to the main application window. To achieve or keep the floating state of the window, press the CTRL key while dragging the window.

Independent of the synchronization status the extent in a Data View can be changed without influencing the extent in the main map and other Data Views.

Data Views are coupled to specific data frames. When you open a new Data View it will be coupled to the currently active data frame. When you change the active data frame the Data View will be changed as well, provided synchronization is on.

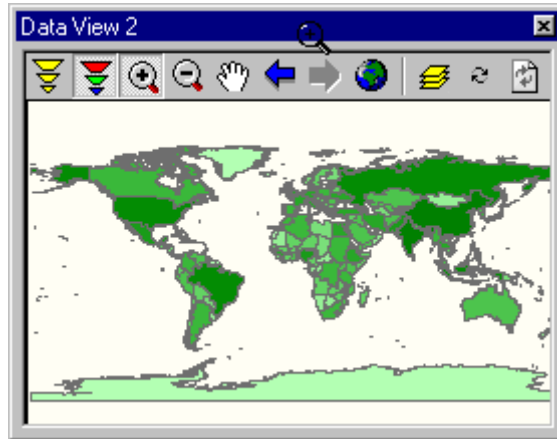
To keep a Data View coupled to a data frame, switch Synchronization off for one Data View and change the active data frame.















In case you need help or information about ARIS Multi Data View, please press the  button to show this document. You will need a program like [Adobe Acrobat \(Reader\)](#) to open the PDF help file.

5.2 Data View Toolbar

The toolbar at the top of the Data View contains buttons to customize the map.



The toolbar contains the following commands:

	Toggle Synchronize: Synchronizes the Data View with the data frame it is coupled to, excluding legend changes. Either none or one of the Synchronize buttons can be active.
	Toggle Synchronize All: Synchronizes the Data View with the data frame it is coupled to, including legend changes. Either none or one of the Synchronize buttons can be active. By default this button is on.
	Zoom In.
	Zoom Out.
	Pan.
	Zoom to previous unsynchronized extent of the Data View.
	Zoom to next unsynchronized extent of the Data View.
	Zoom to full extent.
	Select layers to be displayed. <div data-bbox="986 1429 1353 1664" style="float: right; border: 1px solid gray; padding: 5px; margin-top: 10px;">  </div>
	Refresh. Sometimes the Data View or its toolbar is not drawn completely and this button repaints the window.
	Reload. Empties the Data View and, provided one of the Synchronize buttons is active, reloads the active data frame.

5.3 Data View Behavior

The Data View behavior as a result of actions in the ArcMap main map view is stated below.


Action	Synchronized Data View	Synchronized_All Data View	Non-synchronized Data View
Add Layer	Add layer and set its visibility as it appears in the main map	Add layer and set its visibility as it appears in the main map	Add layer but set it to not visible
Move layer	Move layer	Move layer	Leave layer in the current position, unless layer is part of a group layer (see chapter 4.5, section 1.2)
Remove layer	Remove layer	Remove layer	Remove layer
Make layer (in)visible	No action	No action	No action
Change legend in active data frame	Legend does not change	Legend changes, unless Data View is not coupled to the active data frame (see chapter 4.5, section 1.1)	Legend does not change
Change extent in active data frame	Follow extent of Main Map. When pressing the "Previous Extent"-button the extent changes to the previous extent of the Data View (not of the main map)	Follow extent of Main Map. When pressing the "Previous Extent"-button the extent changes to the previous extent of the Data View (not of the main map)	No action
Make other data frame active	The Data View changes to the active data frame	The Data View changes to the active data frame	No action
Data View Reload	The Data View will be emptied first and reloaded with the map in the active data frame	The Data View will be emptied first and reloaded with the map in the active data frame	The Data View will be emptied

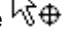
When toggling synchronization of the Data View some properties are changed and others stay the same.

Property	Synchronized → Non-synchronized	Non-synchronized → Synchronized All	Non-synchronized → Synchronized
Extent	No change	Changes to extent of Main Map	Changes to extent of Main Map
Order of layers	No change	Changes to order of layers in Main Map	Changes to order of layers in Main Map
Visibility	No change	No change	No change
Colors	No change	Changes to colors of the Main Map	No change

4.4 Data View Location Pointer

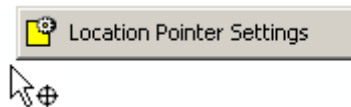
A new feature in ARIS Multi Data View 2.0 is the possibility to show a Location Pointer in the Data View(s). The Location Pointer is synchronized with the position of the mouse in the main map view of ArcMap.

You can activate the Location Pointer by clicking the  button on the ARIS Multi Data View toolbar. The default pointer, a black CAD-style cross, will show up in all open Data Views.

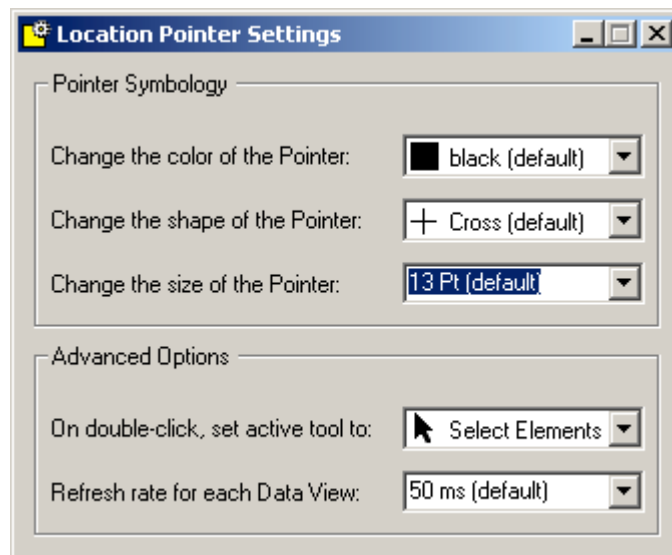
The cursor of ArcMap will look like  when the Location Pointer is active.

You can deactivate the Location Pointer by double-clicking the left mouse button or by selecting another tool on the ArcMap toolbar.

Pushing the right mouse button will show the following context menu:



Open the Location Pointer Settings by clicking the menu option and the following window will show up on top of the ArcMap application:



In this window you can change the *Pointer Symbology*, in case the default Location Pointer doesn't show up clearly enough in the Data View(s). It's possible to change the color, the shape and the size of the pointer. Please note that the changes will be applied to all pointers in each open Data View.

Changes to the symbology options can be viewed directly while the Location Pointer Settings window is open or minimized to the Windows Taskbar. Just move the cursor in the ArcMap main data view and the Location Pointer will reflect the changes you've made in the Data View(s).

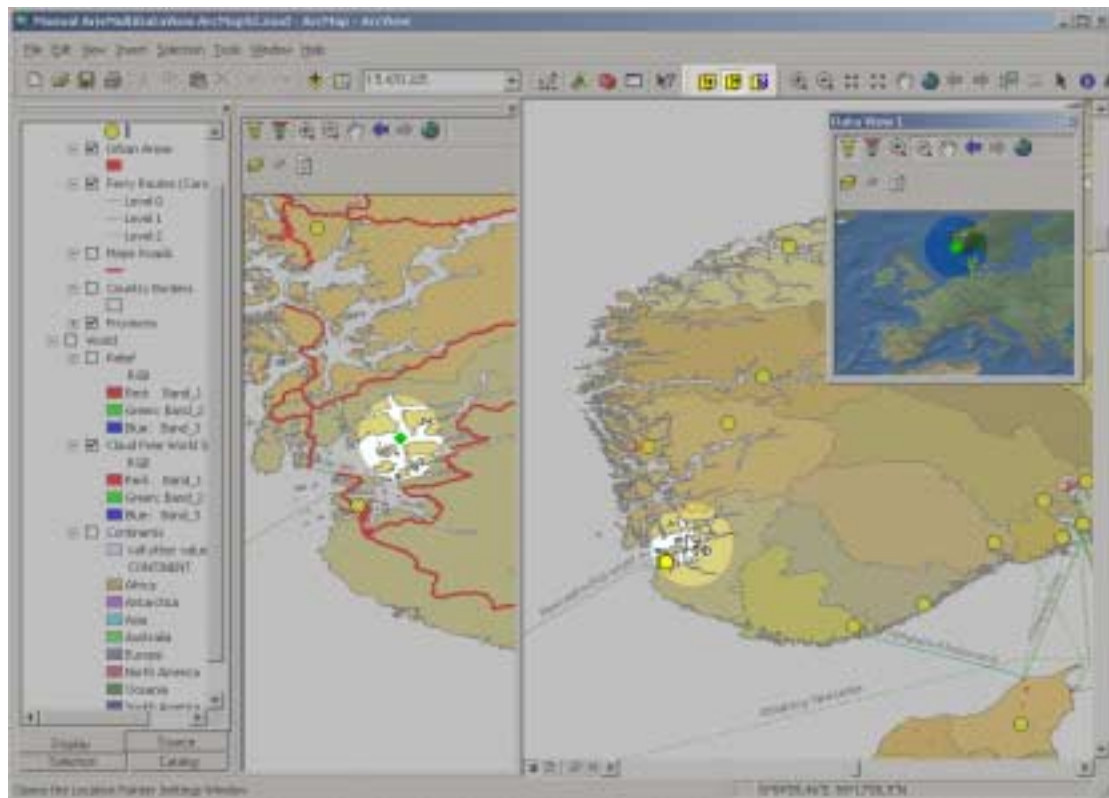
The Location Pointer cannot be toggled and therefore the pointer cannot be used in conjunction with a standard ArcMap tool. However, in the *Advanced Options* region of the Location Pointer Settings, you can set the tool you want to be activated directly after you have double-clicked the left mouse button to deactivate the Location Pointer. This way you won't have to move away to select another tool, so your position on the main map view is maintained. This can be useful when digitizing, selecting or identifying small features on a large map.

The tools you can select are *Select Elements*, *Select Features*, *Identify*, *Pan*, *Zoom In*, *Zoom Out*, *Edit Tool* and *Sketch Tool*. For the latter two, the ArcMap Editor toolbar needs to be active and 'Start Editing' must be enabled.

Another way to deactivate the Location Pointer is by simply clicking on another tool in the ArcMap toolbar. This will remove the pointer from the Data View(s), but the symbology settings will be preserved.

The Location Pointer is not a regular mouse cursor. It is a graphic that refreshes itself every 50 milliseconds, by default. To save system resources, each time an extra Data View is opened, the refresh rate of the tool increases by the selected value in the *Advanced Options* region of the Location Pointer Settings. This value works in an accumulative way, which means that a value of 50 milliseconds will set the refresh rate to 150 milliseconds when 3 Data Views are open.

Here is an example of what the Location Pointer might look like:



5.5 Data View Limitations

- 1) There are limitations due to differences in events fired by ArcMap for active and inactive data frames, as well as differences in events when layers are part of a group layer or not:
 - 1.1) When the legend changes, the Data View will normally change accordingly when Synchronize All is on. Only when the legend is changed in an inactive data frame the legend in the coupled Data View will only change when the Synchronize All button is clicked off and on again.
 - 1.2) When a layer is moved, the layer will move in the Data View as well if it is synchronized and coupled to the data frame where the action was done. If the Data View is not synchronized the layer will be moved as well when it is part of a group layer.
- 2) Multi Data View does not support group layers. Layers in a group layer in the Main Map will be represented as if there was no group layer at all.
- 3) The Location Pointer in the Multi Data View is refreshed with a certain rate. It checks for mouse movements and updates the pointer in the opened data view(s) accordingly. Depending on the specifications of your computer hardware and how many data views are open, you might experience that one or more pointers start to lag behind. When this happens, you can change the refresh rate in the Location Pointer Settings window (see chapter 4.4 of this document) and see if the performance increases.
- 4) Due to the behavior of the Location Pointer and some limitations of ArcMap, it is not possible to activate the pointer while working with another tool e.g. Identify or Select Features. Please read chapter 4.4 for more information about a workaround for this issue.
- 5) The Location Pointer Settings will not be saved. After an ArcMap session ends, the symbology and advanced options will reset to the default values. However, as long as ArcMap is open, the settings will be maintained for each document.